



## MATRIX FLAG BOX LED PROFILES

### Instructions

**Daniel Newman Racing** is where cutting-edge technology meets the thrill of racing. We create advanced SimHub-compatible LED profiles to enhance your Sim Racing performance. Whether you're a new rookie or pro driver, our products are designed to immerse you in the action. Trusted and used by serious racers, including real life Formula 1 and IndyCar champions, **DNR** profiles are built to give you the edge when it matters most.

The below tutorial will explain the **DNR** Matrix Flag Box LED profiles installation and customisation options.

In order to use the **Daniel Newman Racing** Matrix Flag Box LED profiles you will need to ensure you have the latest version of SimHub installed. Please ensure before you begin installation that the latest version is running on your system.

You can download SimHub here - <https://www.simhubdash.com/>

In addition to installing SimHub, you will need to ensure you have a set of SimHub compatible Matrix Flag Box device.

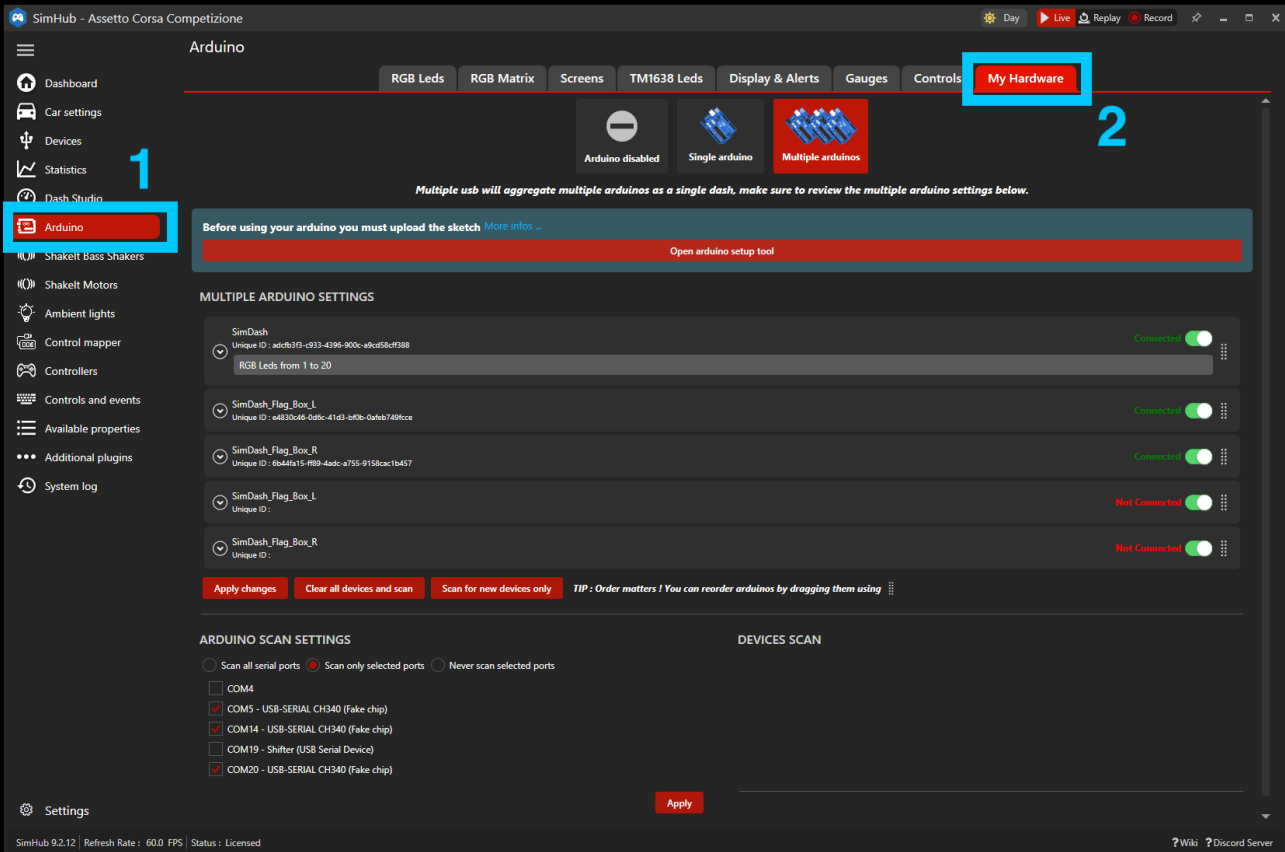
A pair of Flag Box LED profiles are available on the website to suit both:

Single Flag Box  
Pair of Flag Boxes

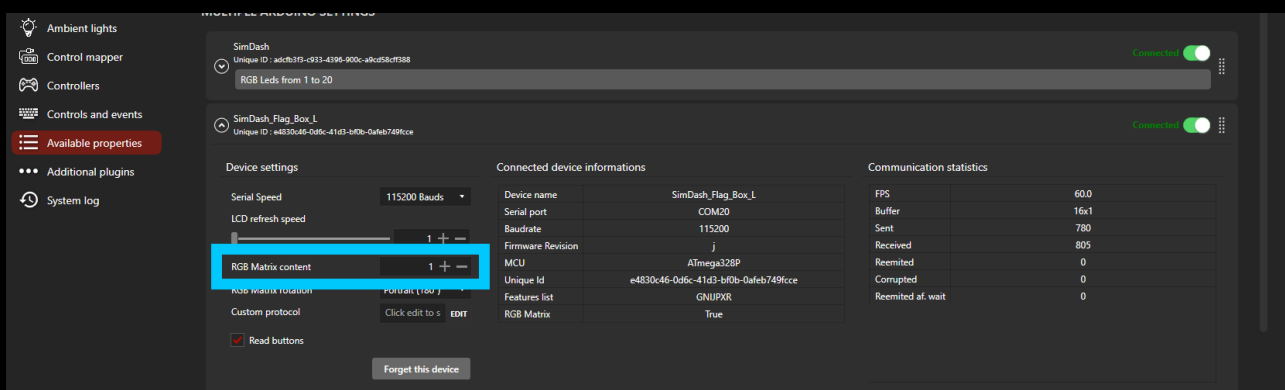
## Step 1 - Set up your Flag Boxes

The first step of setting your **Daniel Newman Racing** Matrix profile, is actually to set up your matrix hardware. The process for which is slightly different to other Arduino based devices.

First you need to open SimHub and navigate to the Arduino page (1) and then select the My Hardware tab (2) on the right hand side of the top of the page. The below screen will then be displayed.

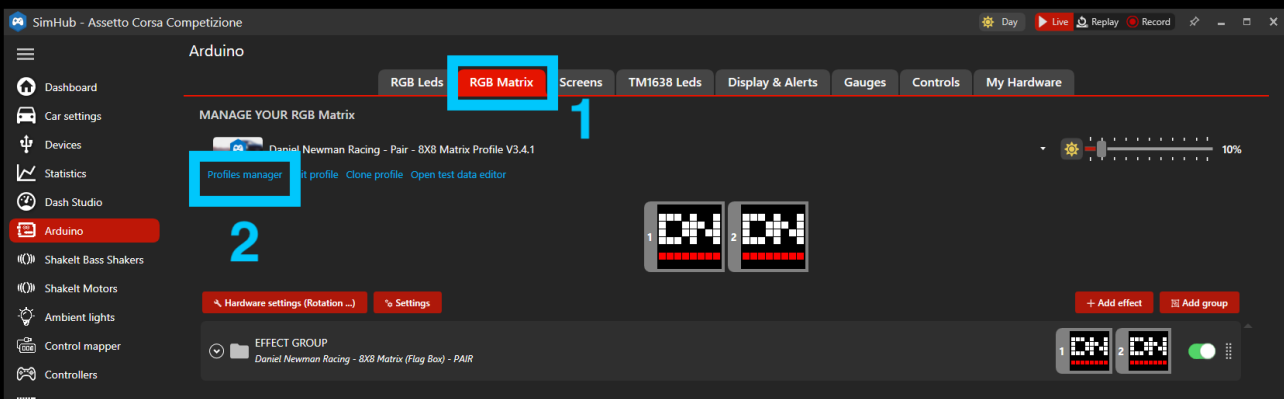


This is where all of your Arduino based devices are shown. These could include DDU LEDs, Wheel Button LEDs etc, depending on how your other peripheral devices are connected. Within this screen you need to locate your Flag Boxes (shown in this demonstration as SimDash\_Flag\_Box\_L & SimDash\_Flag\_Box\_R). You can then open each flag box device using the drop down arrow to the right of its name.



Importantly you now need to select the position of the Flag Box Matrix. If you have a single Flag Box matrix, the RGB Matrix content number should be 1. If you have a pair of Flag Box matrix, you need to ensure the LEFT box is RGB Matrix content number 1 and the RIGHT box is RGB Matrix content number 2. This will ensure that the correct effect is sent to the correct box.

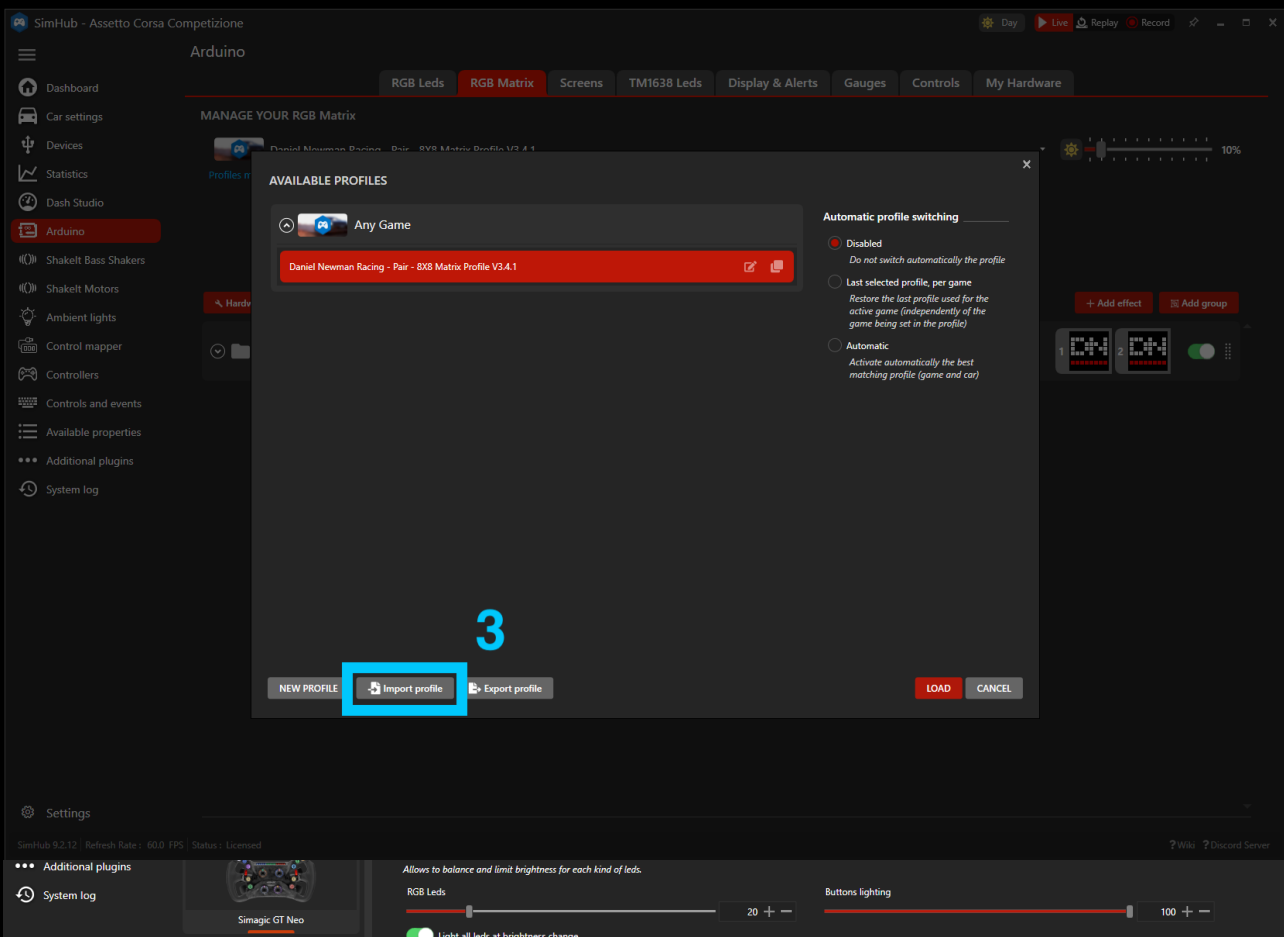
A common mistake at this step, is people do not change these numbers and both boxes are left as 1, meaning the boxes do not operate as intended, only showing you half of the desired effects.



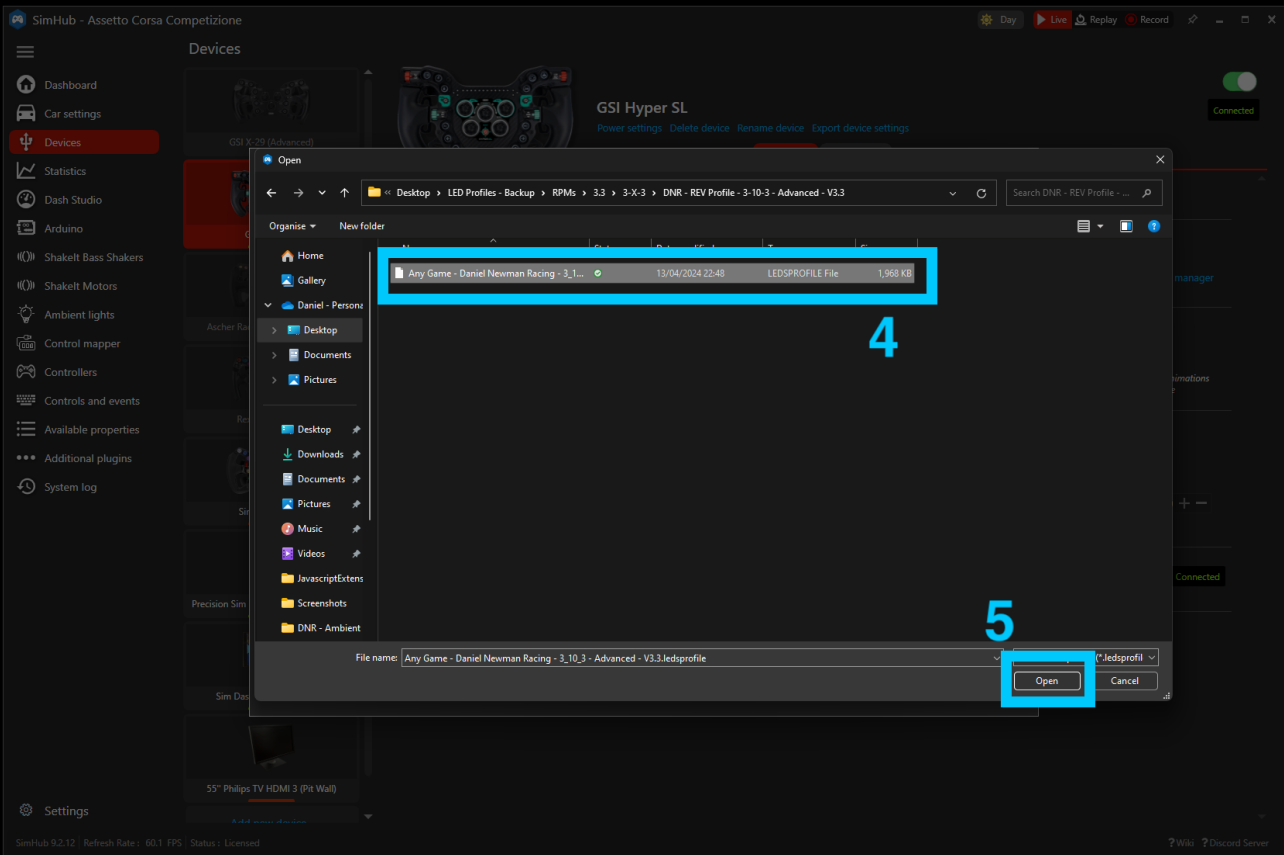
Following this step, you need to navigate to the RGB Matrix tab shown as (1) below.

You'll then need to select profile manager (2) to open the import window.

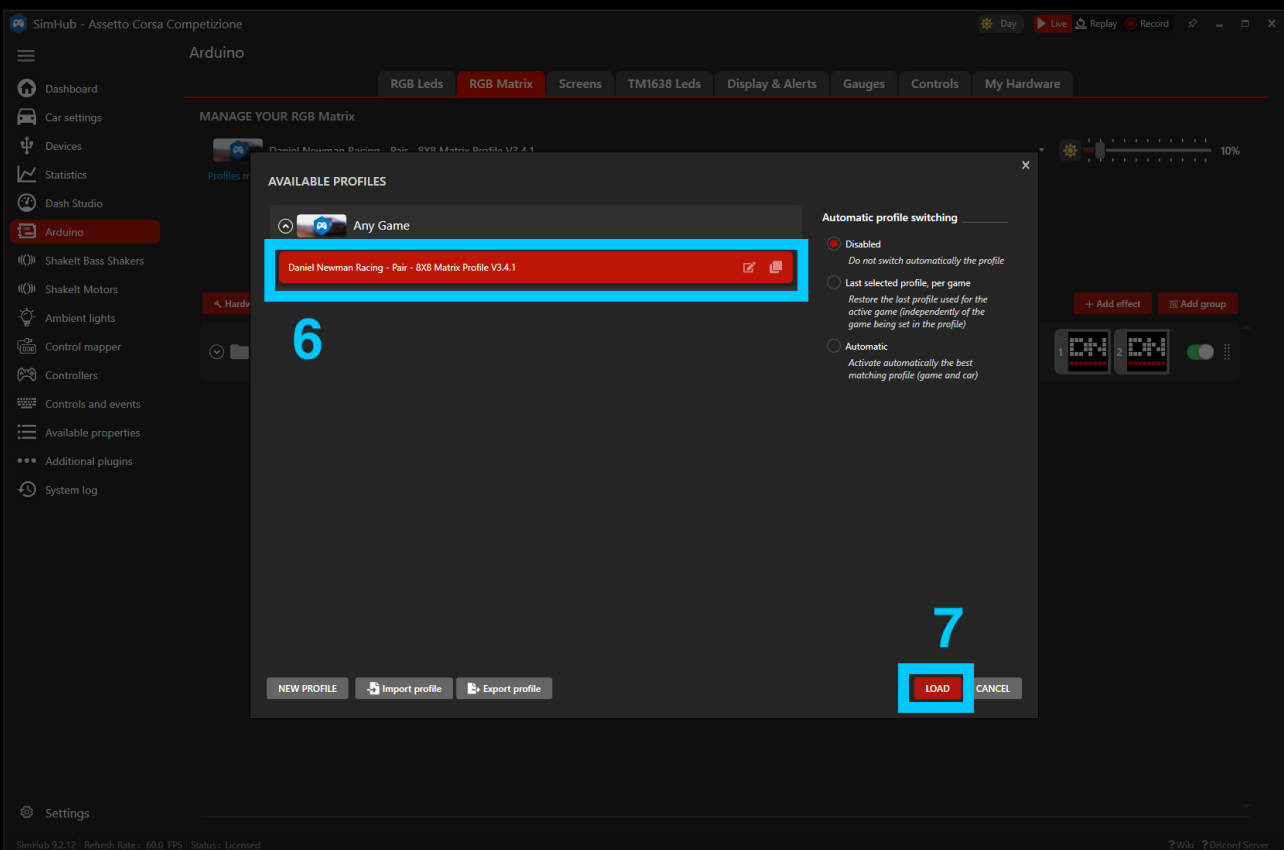
After pressing profiles manager, you will see the screen below, where you can now press 'Import profile' (3).



You now need to navigate your file explorer to the location of the saved profile, select it as shown in number (4), and then press open as per number (5).

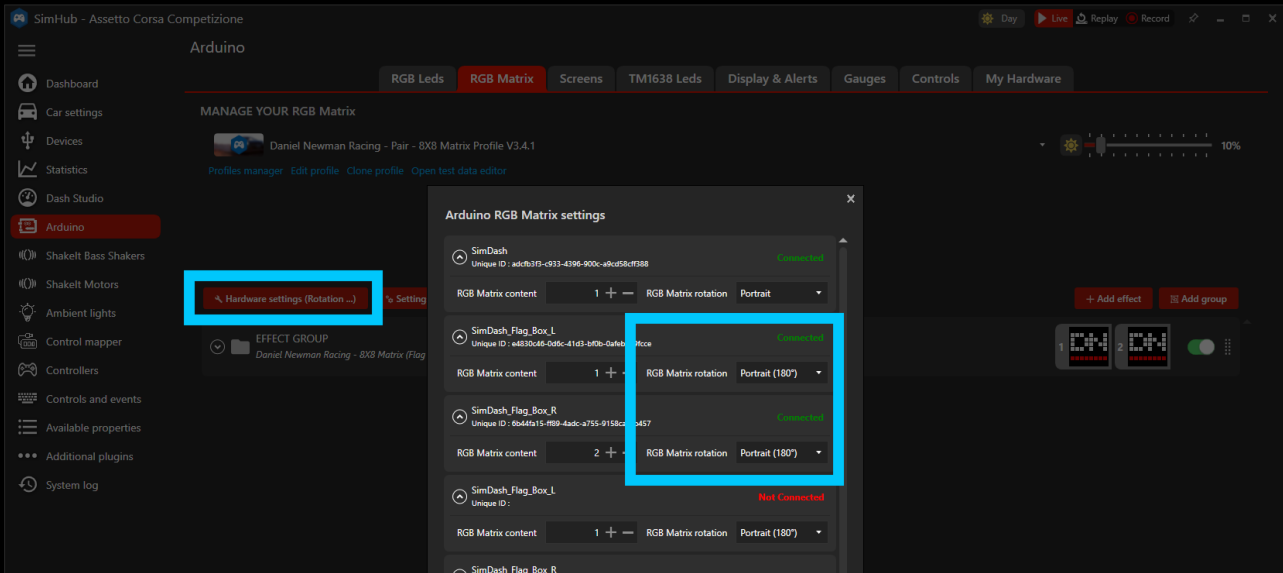


Lastly, select the profile in number (6) ensuring you select the correctly named profile, and then press load as per option (7).



Now your Matrix LED profile is loaded, you may notice that depending on the orientation of your Flag Box installation the screen content is not in the correct position. This happens when a Flag Box is not mounted the correct way up due to mounting constraints, but is easily rectified.

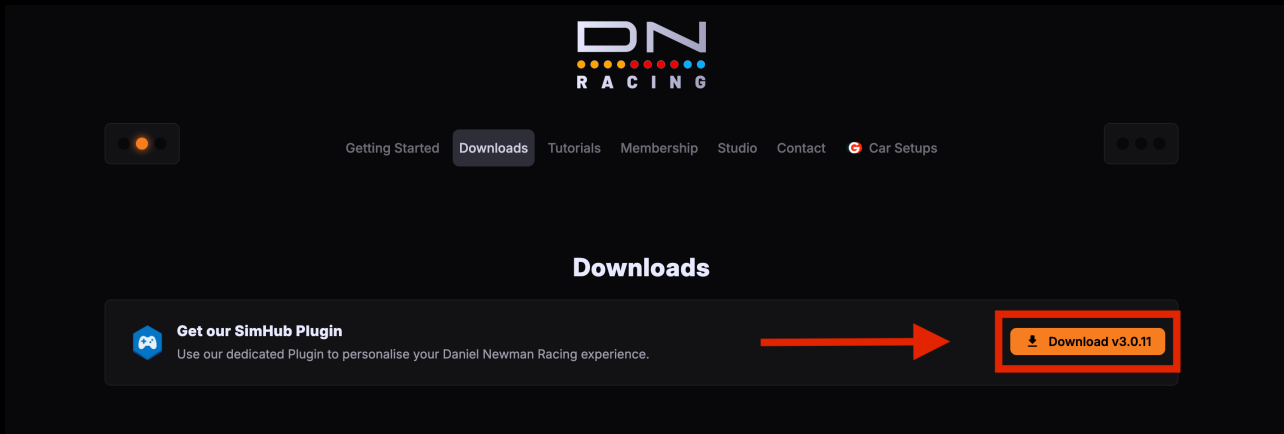
Simply open the Hardware settings open shown below and adjust the RGB Matrix rotation until the Flag Box displays the content in the correct orientation.



Your Matrix Flag Box installation is now complete. The profile has a series of default options loaded within it, but if you wish to customise these to your own preference and taste, please move onto Step 2 below.

## Step 2 - Install the Plugin

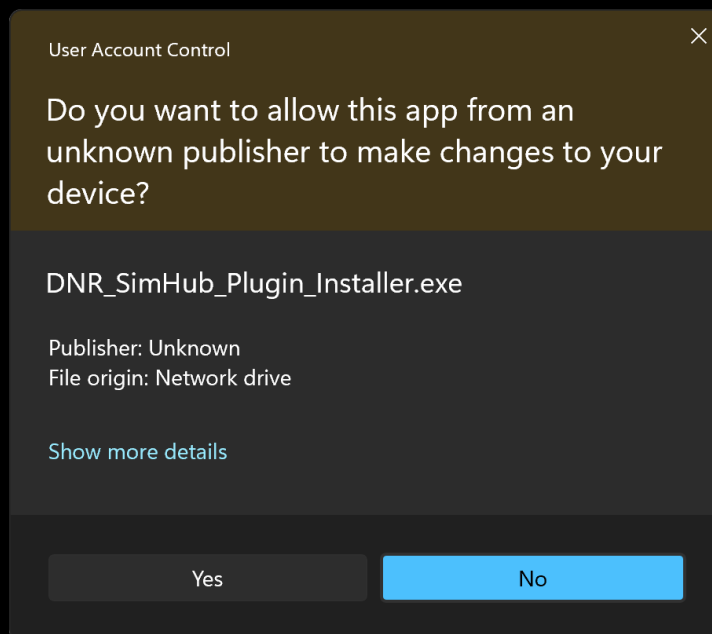
First you will need to ensure you have downloaded the **Daniel Newman Racing SimHub Plugin**. The Plugin installer file can be downloaded from the DNR website at the top of the Downloads page.



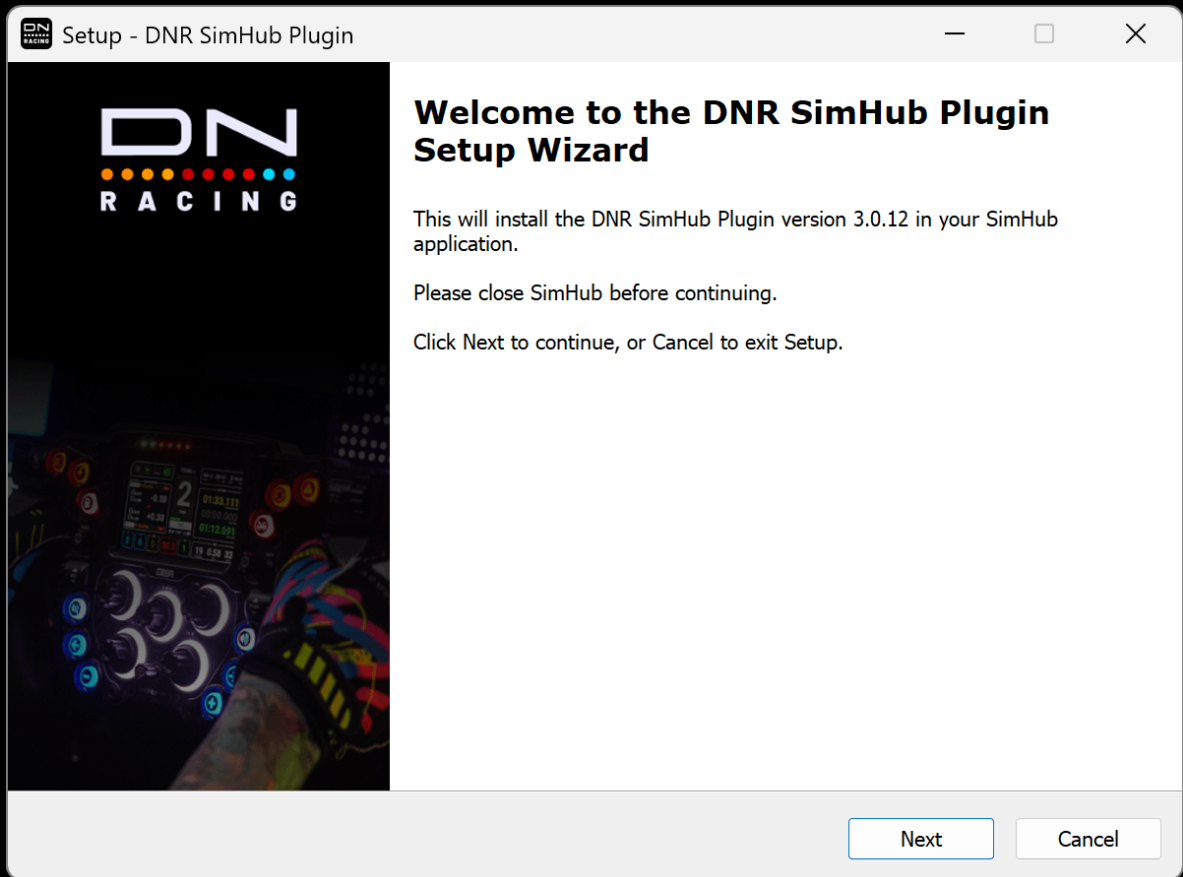
Once the file has been downloaded, you will need to ensure that SimHub is **CLOSED** on your PC for the installation to take place. (It is important that the application is fully closed, and not just minimised during this process).

Once closed you will need to locate the downloaded DNR\_SimHub\_Plugin\_Installer.exe file.

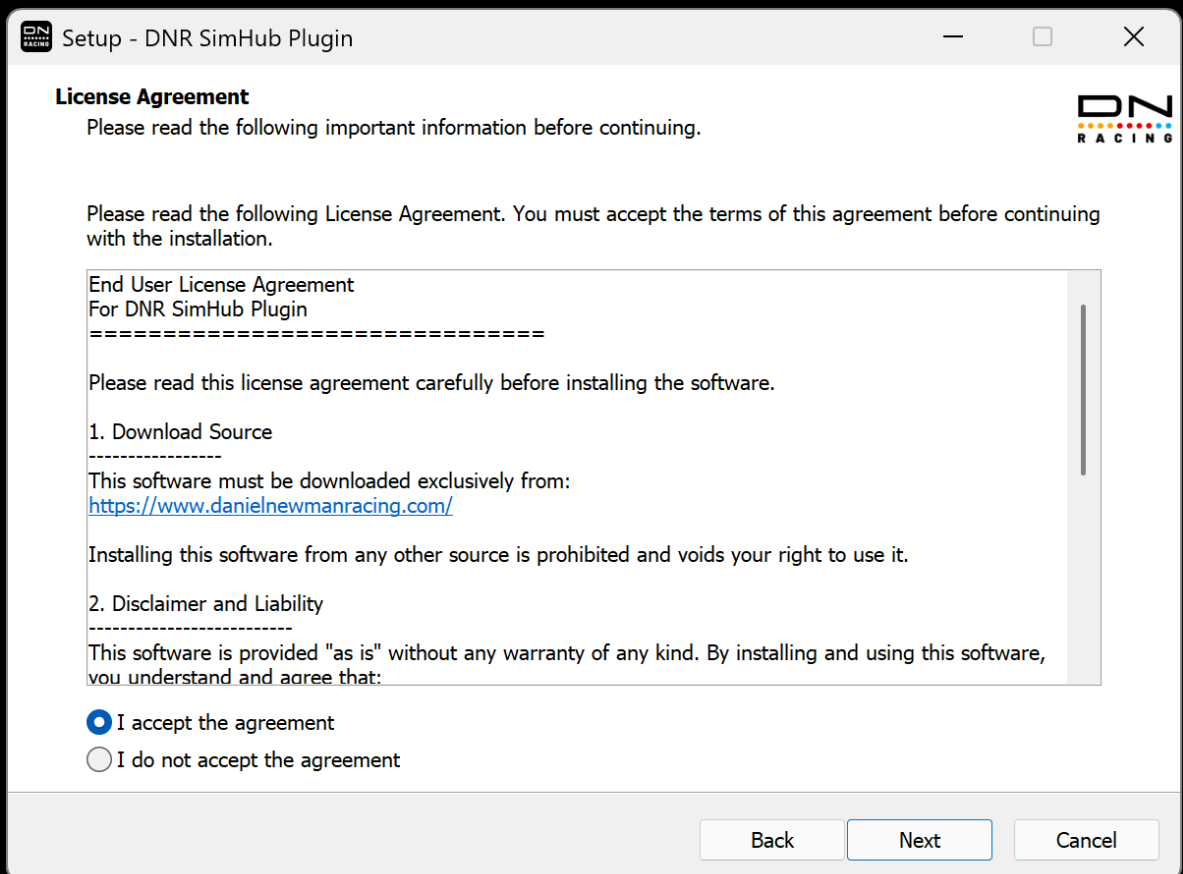
Run the installer, by double clicking the file. If you are presented with a box asking you to trust the installer, you can choose 'Yes'.

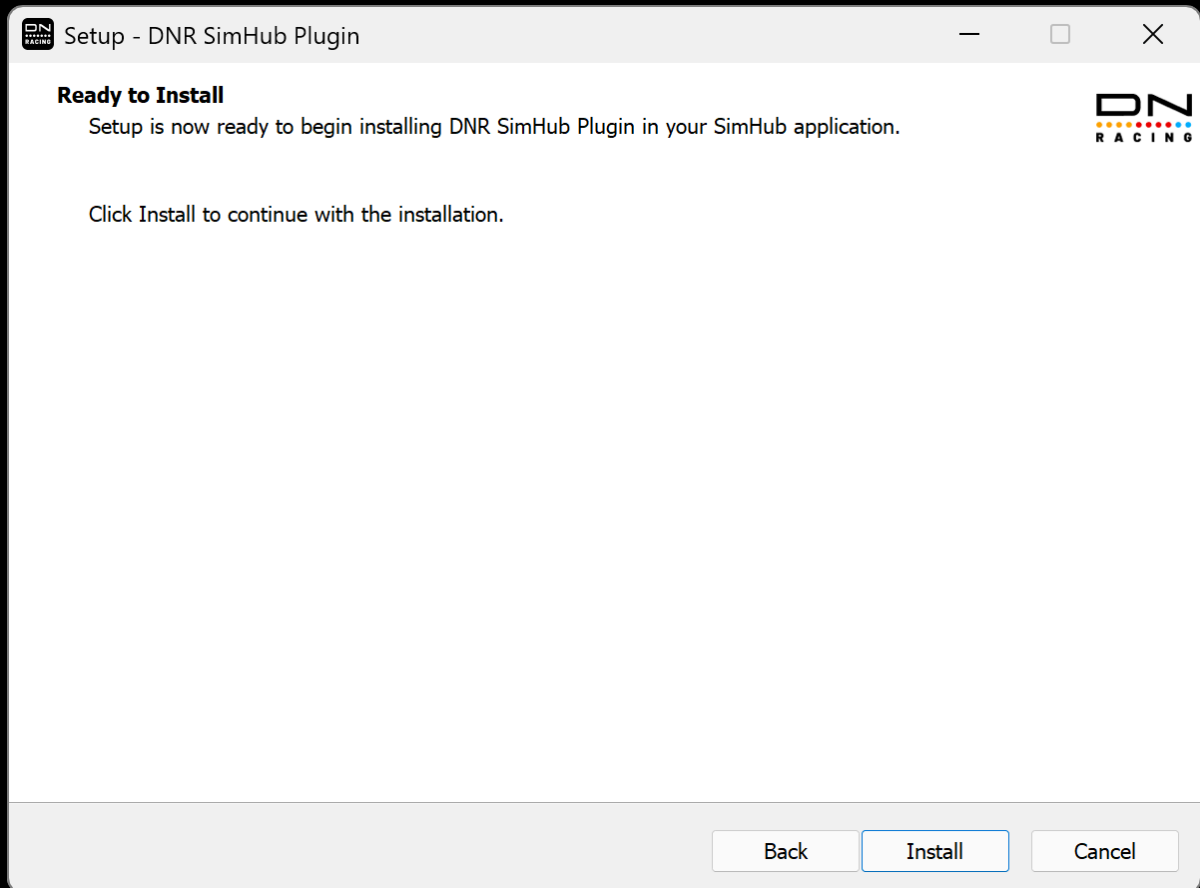


You will then be shown the DNR SimHub Plugin setup wizard. You can proceed through these steps to install the Plugin.

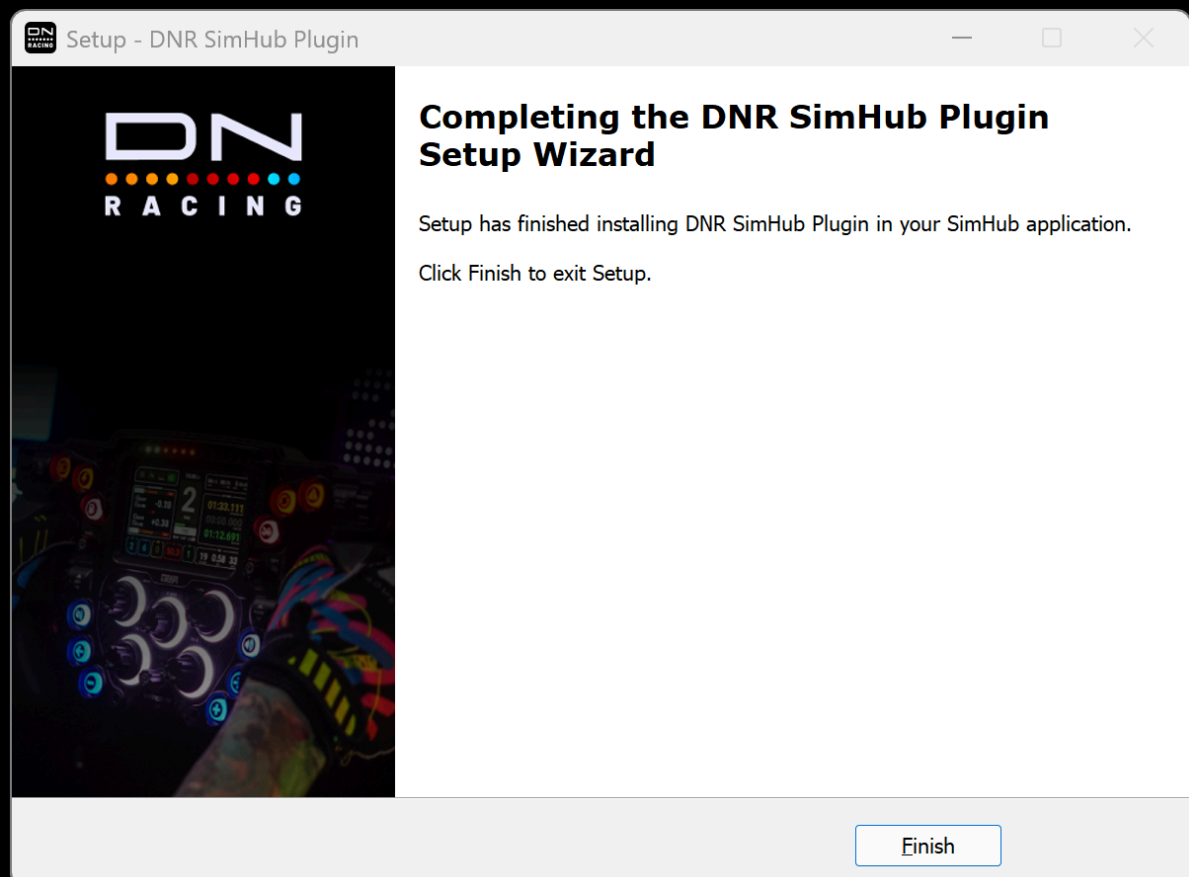


Ensure you read the license agreement, and press 'I accept the agreement' if you wish to proceed with the installation.

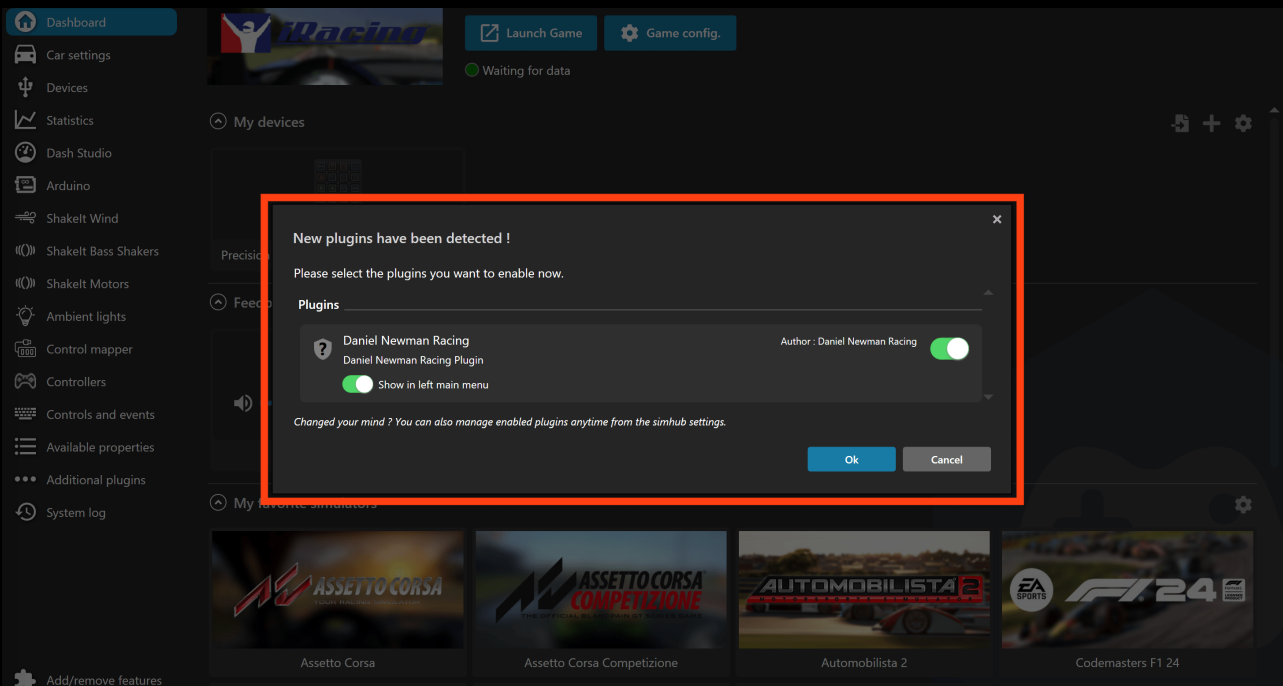




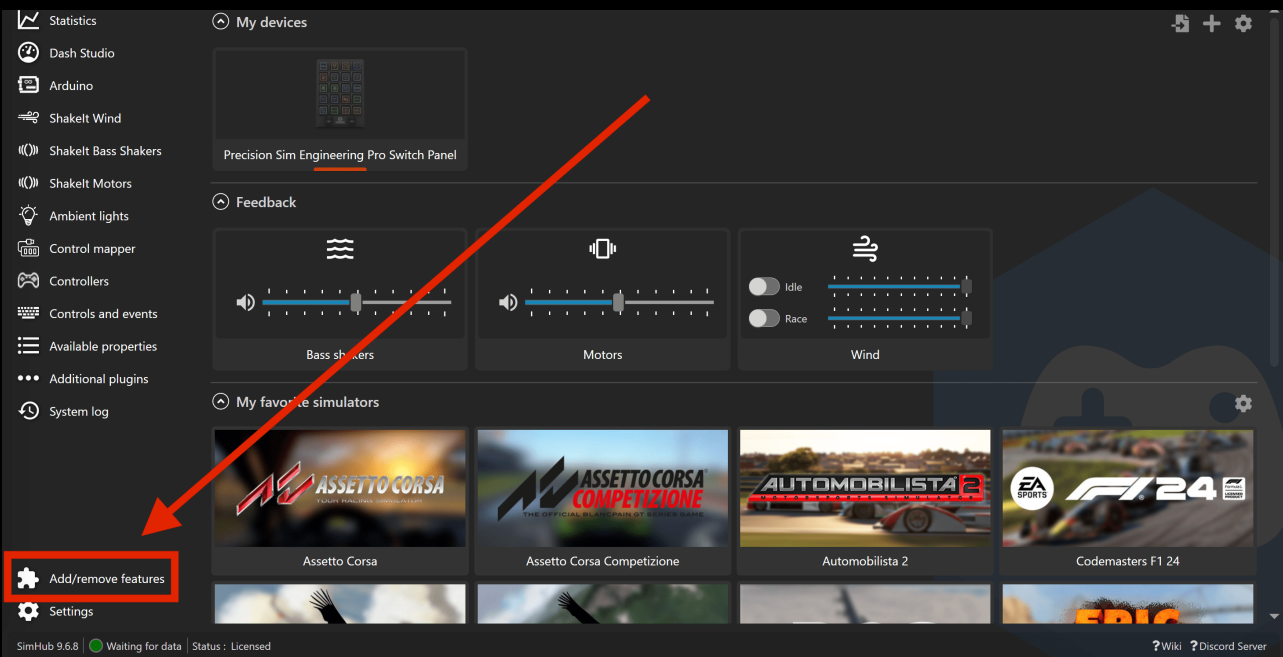
The plugin has now been installed, press finish to exit the Installation wizard.



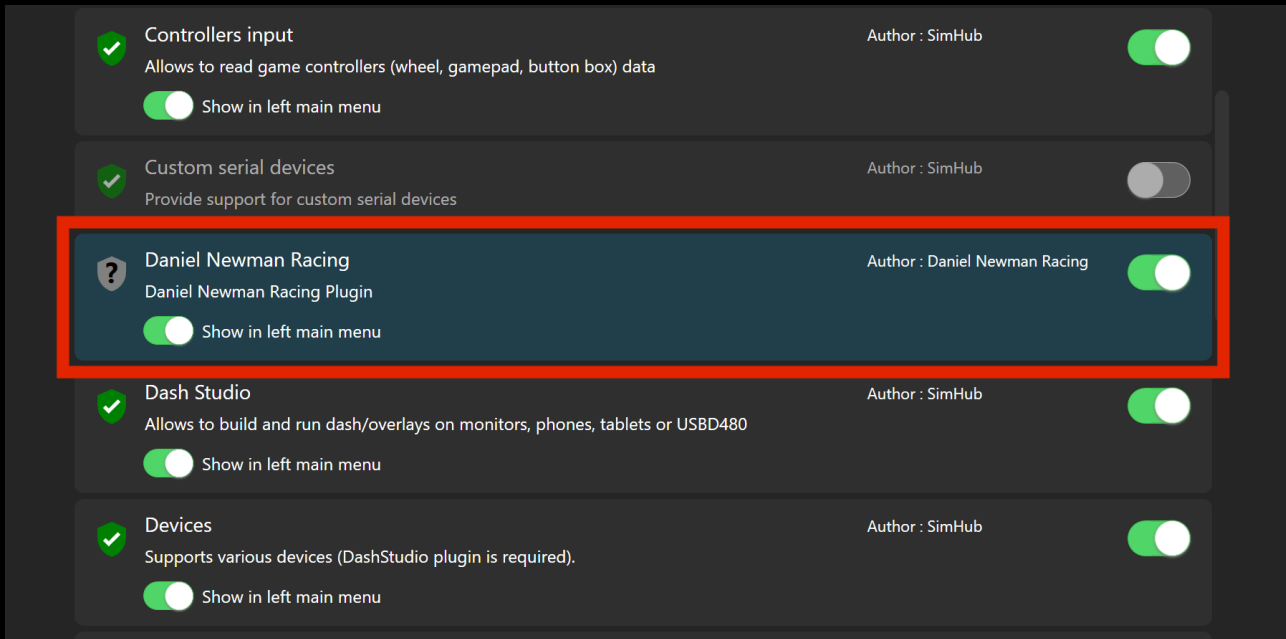
Once SimHub has opened you should be greeted with a pop up window, asking if you wish to activate the plugin, and whether you want to show it in the left hand menu. You should select yes to both. This will ensure that the Plugin is accessible for you to use within SimHub.



If for any reason, the 'new plugins have been detected' screen does not display, you can manually activate the plugin by navigating to the bottom left hand corner of the SimHub screen and choosing the add/remove features button.



Here you can now locate the DNR LEDs plugin settings and enable both of the toggle options.



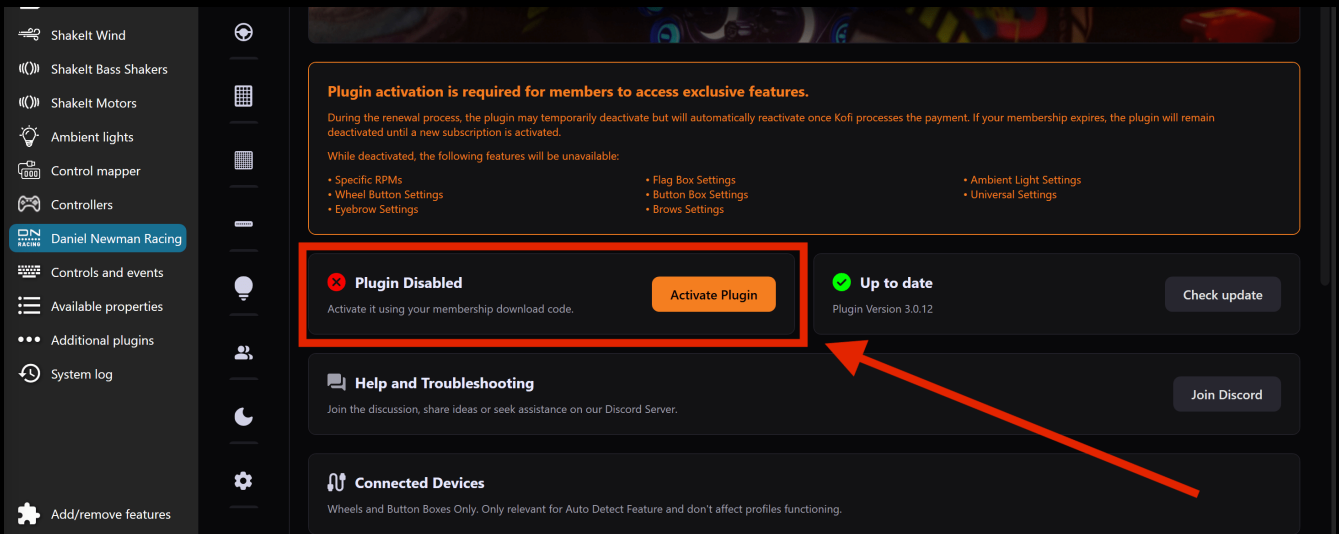
The Daniel Newman Racing Plugin is now installed.

### Step 3 - Activate the Plugin

Members of Daniel Newman Racing have access to unrestricted customisation within the plugin. Free users are limited to using the Telemetry tab only.


On the homepage of the Plugin you will see an activation box.

To activate the plugin, you will need to click on the Activate Plugin box, and then insert the password code you received via email as part of your membership:




Thank you for becoming a member of Daniel Newman Racing! We are thrilled to have you join our community of passionate racing fans and supporters. Your membership directly helps us on our journey, and we couldn't be more grateful for your support.

As a member, you now have exclusive access to behind-the-scenes content, special updates, and members-only perks. Below are your login details to access your account:

 Code

★ Tier : Team Principal Member

 Expiration date : 22/12/2025

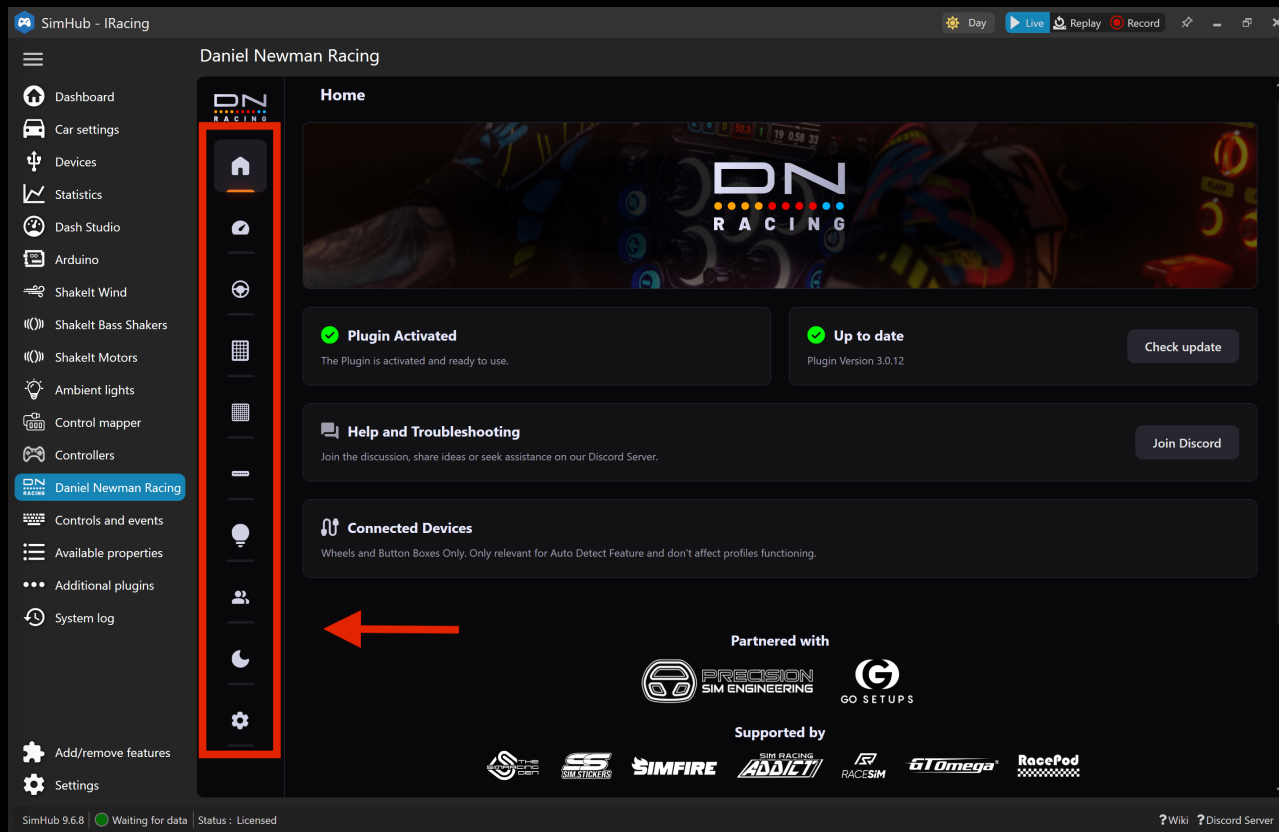
If your code has been lost you can retrieve it here:

<https://danielnewmanracing.com/get-my-code>

## Step 4 - Customising your preferences

The Daniel Newman Racing SimHub plugin provides realtime customisation to a multitude of settings and

Along the left hand side of the plugin is a toolbar naming each section of the plugin.



A list of customisation options for each device is contained within each menu item, relevant to the device you wish to customise.

Both the True Dark Mode and Universal tabs will contain settings relevant to **ALL** devices.

For any further issues and troubleshooting you can contact Daniel Newman Racing via the website (<https://www.danielnewmanracing.com>) or via email at [support@danielnewmanracing.com](mailto:support@danielnewmanracing.com)

Alternatively you could join the excellent Discord Community, where somebody will be able to assist you: <https://discord.gg/danielnewmanracing>

If you like the work created by Daniel Newman Racing, you can also become a member of contribute towards the ongoing development here: <https://www.ko-fi.com/danielnewmanracing>